

### Use:

The gong ELG6 / ELG6K is intended for installation behind a face plate with sound openings, preferably to signal the arrival and travel continuation of a lift car. It enables direction dependent acoustic signalization of the next travel direction as required by the norm EN 81-70:2005: 1-tone-gong for „up“ and 2-tone-gong for „down“.

The ELG6 can also be operated as a simple 1-, 2- or 3-tone-gong.

The activation can be made by a continuous signal or a short switching pulse. The activation for UP and DOWN is realized internally via an optocoupler. Thus, the ELG6 can be operated with all common types of control. The volume can be continuously adjusted using a control dial.

### Assembly:

The installation is preferably made at the faceplate via welding studs or in the box on the KRONENBERG mounting rail. The foam ensures the sealing and acoustic coupling to the faceplate. The foam must be in full contact with the faceplate to maintain the seal against moisture, the maximum volume and the optimum sound. The membrane of the speaker is insensitive to moisture.

### Connection:

The connection is made via a 6-pole screw terminal. For the control of UP and DOWN (optocoupler inputs) both screw terminals „↑+“ and „↑-“ resp. „↓+“ and „↓-“ must be connected. The first two terminals „+“ and „-“ are intended for the permanent voltage supply. When controlling with continuous signals, the application of a permanent voltage is not necessary due to an internal diode circuit, but it reduces the inrush current for activating the gong from up to 1 A to a maximum of 5 mA at 24 V.

The 3-tone gong is triggered when UP and DOWN are activated simultaneously.

At the -K or -A version, there are additionally two 3-pole plug connectors. The plug connectors are intended for the connection to the VAT wiring system, the CAN assembly or the KRONENBERG digital displays with travel continuation function.

### Notes:

- install the gong in such a way that the membrane is protected from destruction
- protect the back side from moisture
- without connecting a permanent power supply to terminal „+“ and „-“ control outputs may be overloaded (inrush current peak up to 1 A)

### Technical data:

device designation	ELG6-SK, ELG6-K, ELG6-A; ELG6K-SK, ELG6K-K, ELG6K-A
housing	glass fibre reinforced, self-extinguishing thermoplastic stainless steel plate, EPDM cellular rubber
level of protection	IP 00, face plate side up to IP54 possible depending on installation
connection type	screw terminal connection with wire protection resp. PH plug connector
abutting cross section	max. 2.5 mm <sup>2</sup>
supply voltage	10 V DC up to 30 V DC
current consumption	I = 30 mA; inrush current peak limited to 1 A
signalization	„UP“ 1-tone gong, „DOWN“ 2-tone gong, „UP+DOWN“ 3-tone gong
volume	infinitely adjustable
fixation	screw fixation M3 or fixation on mounting rail type AS
mounting position	any
EMC compatability	interference resistance according to EN50082-2 criterion B interference emission according to EN50081-1

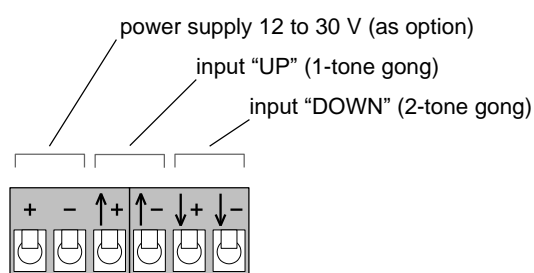
# Operating Instructions

## Electronic gong ELG6 / ELG6K

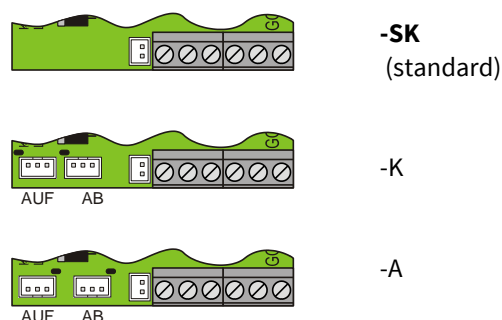
### Order information codes:

	ELG6 - <u>SK</u>	
	ELG6K - <u>SK</u>	
version		connection
normal design = ELG6		<u>SK</u> = screw terminal connection
small design = ELG6K		K = additional PH connector for common cathode (-)
		A = additional PH connector for common anode (+)

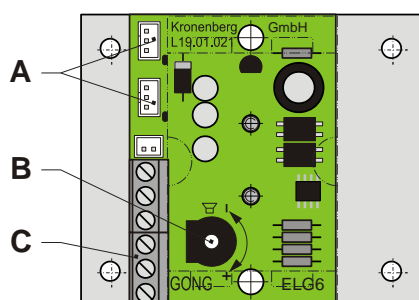
### Terminal assignment:



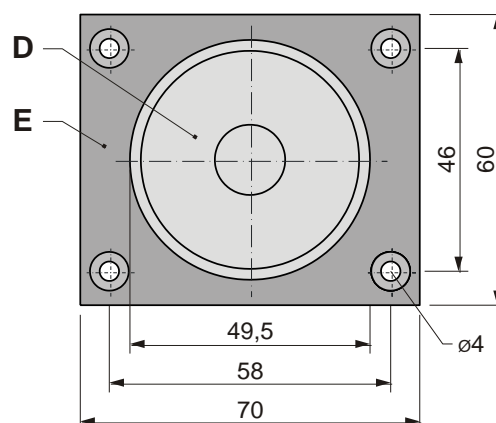
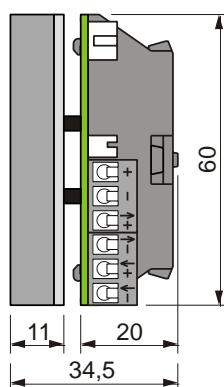
### Connection version:



### Dimensions ELG6:



- A) optional plug connectors
- B) control dial for volume
- C) screw terminals for power supply and control
- D) loudspeaker membrane
- E) foam



### Dimensions ELG6K:

